



Car/IT puts you in the driver's seat

Car/IT the first open DMS, capable of handling multiple makes, multiple manufacturers, multiple suppliers and multiple languages. Its leading edge technologies allow it to be fully integrated and interfaced with the communications tools (DCS) and applications programs (DFS) of the various manufacturers. It is the solution to the requirements of the automotive distribution industry, a state-of-the-art solution.



Extensive functional capacity

Your management solution is at the heart of your information system. **CarIT** represents the new generation of integrated management software. This is the result of 25 years experience in the automotive distribution industry, decades of man-years in development. The best functions of these systems have been upgraded and integrated into **CarIT**.

Technological choices

Choosing a good management application program is a strategic decision. This is why we have chosen technologies that guarantee you total independence, safety, integrity, openness and performance, in addition to significant stability in particular for configurations managing large volumes of data.

Ergonomics

The user interface is simple, user-friendly and developed in accordance with Microsoft specifications. Usage is extremely intuitive, resulting in lower training costs and improved efficiency.

Multi lingual

Screens are in the user's language, and reports in the client's language.

Data safety

System access control, passwords, secured access, operations log, operations follow-up by user and restricted viewing of information are also elements used to make your system and data secure and distribute the information only where it is required.

Centralized and secured administration

CarIT enables the rapid deployment of a low cost management solution. Operating in host mode (ASP) on farm servers, it can be used by distributors via the Internet. The administrator manages users, application programs, companies, screens, menus, etc. easily defining each user's rights. Database access is controlled and locked. The use of parameterization tools is centralized.

Upgrading

CarIT reduces installation and maintenance costs (TCO) and, in thin client mode, considerably increases the life cycle of user stations. New versions and upgrades can be installed easily. Upgrades are low cost, enabling the company to benefit from the latest and best functionalities at all times.

Drill down information

Users can refer back to all the supporting documents governing the information without leaving the application program. This approach allows users to devote themselves fully to their tasks.

Specific automotive ERP

CarIT is the ERP dedicated to the automotive distribution industry it is interfaced with numerous market standard tools. Accounting packages are software packages with no specific automotive elements but which do depend on the country, the size of the business and its structures. **CarIT** offers interfaces with the majority of standard accounting software.

International solution

CarIT is an international solution based on main core programs that are identical all over the world. The country layer contains all the national functions.

Manufacturer's interface

The accounting and management of the dealership are specific to the automotive dealership business and independent of the manufacturer. The DMS must, however, be linked to the manufacturer's DCS. This guarantees time saving, avoids data re-entry and enables information sent to the manufacturer to be validated.

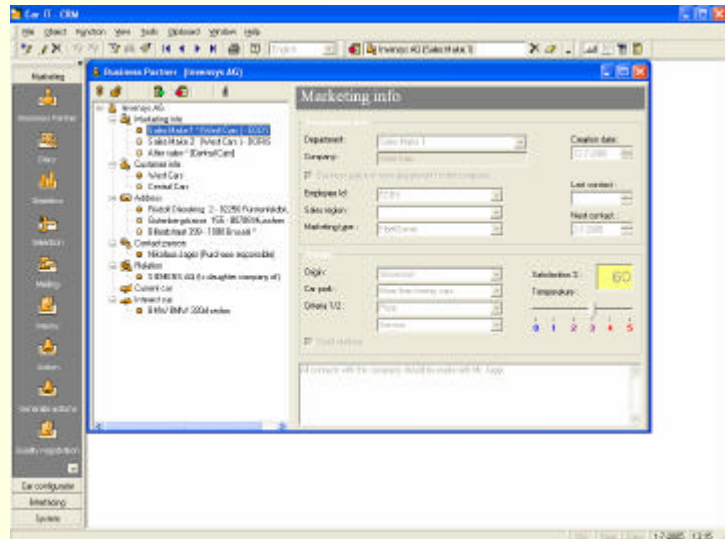
Client-oriented

CarIT places the client at the center of its activity. Driver's management, monitoring of personalized post-its on the client file or vehicle, e-mail transmission to the client, appointments management, maintenance contract, campaigns follow-up, incidents management, etc.



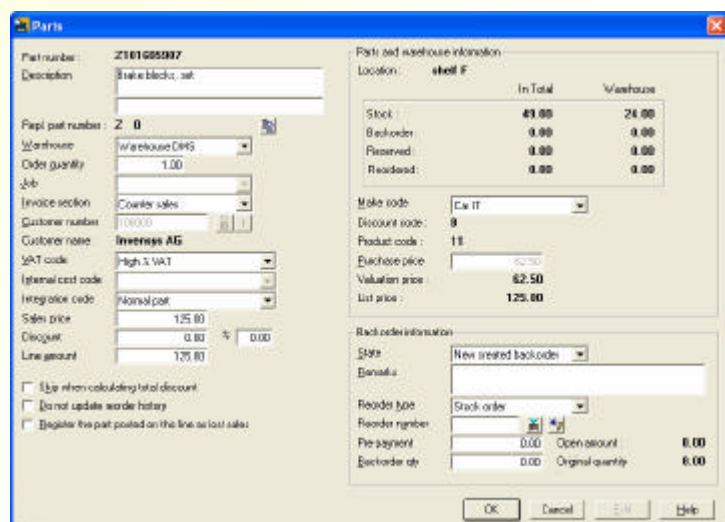
Sales management

- Marketing database
- Car and contact information
- Price offers
- Selection and segmentation
- Links to MS WORD®
- Links to MS EXCEL®
- Contact definitions
- Contact strategy
- Customer satisfaction
- Complaint management
- New and used car sales
- Targets
- Trade in administration
- New and used car inventory
- Invoicing and invoice splitting
- Sales tax and profit adjustment
- Purchasing cost administration
- Wash out
- Chain statistics
- Report Generator



Warehouse management

- Multiple valuation methods
- Postings
- Price changes
- Number changes, supersessions
- Link manufacturer EPC
- Multi type ordering
- Customer backorders
- Receipts
- Counter Sales orders
- Summary invoicing
- Invoice and line splitting
- Inventory control (stock-taking)
- Inventory warnings
- Lost sales
- Dead stock control
- Detailed history
- Scrapping
- Statistics
- Report Generator





Service management

- Workshop planning system
- Workshop capacity overview
- Transfer planning to RO and invoice
- Workshop administration
- Employee schedules
- Absence registration
- Work and standard times
- Timekeeping interface for monitoring workshop and attendance
- Clocking and monitoring of in/out times
- Clocking and monitoring of RO
- Multi document RO
- RO estimates and transfer into RO order and invoice
- Explosions and packages
- Third party work
- Customer and car notes
- Customer backorders
- Flexible invoice with job registration
- Invoice and line splitting
- Complaint management
- Statistics
- Claim administration
- Interface to manufacturers warranty applications
- Automated recall campaign
- Report Generator

